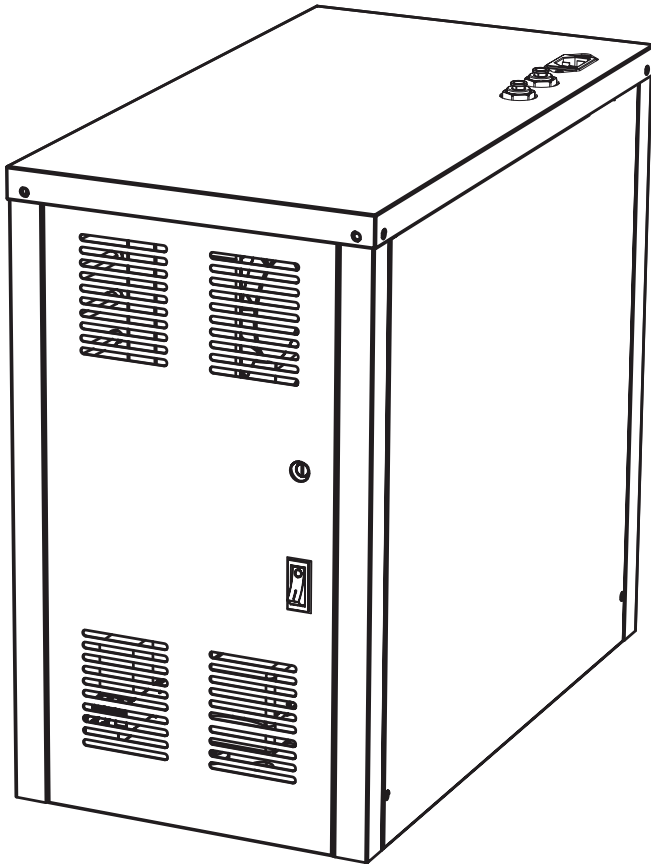




Installation and User Manual

Quench Undercounter Water Cooler



Model

WC-Q-UCWC-WM

Contents

| | | |
|-----|------------------------------|-------|
| 1 | Safety Information | 3 |
| 2. | Installation Template | 4 |
| 3.1 | Connecting Water Supply | 5 |
| 3.2 | Connecting Electrical Supply | 6 |
| 4. | Maintenance & Care | 6 |
| 5. | Troubleshooting | 7 |
| 7. | Wiring Guide | 5 |
| 8. | Operation | 6 |
| 9. | Troubleshooting | 7 |
| 10. | Warranty Card | 7 - 8 |

1. Safety Information

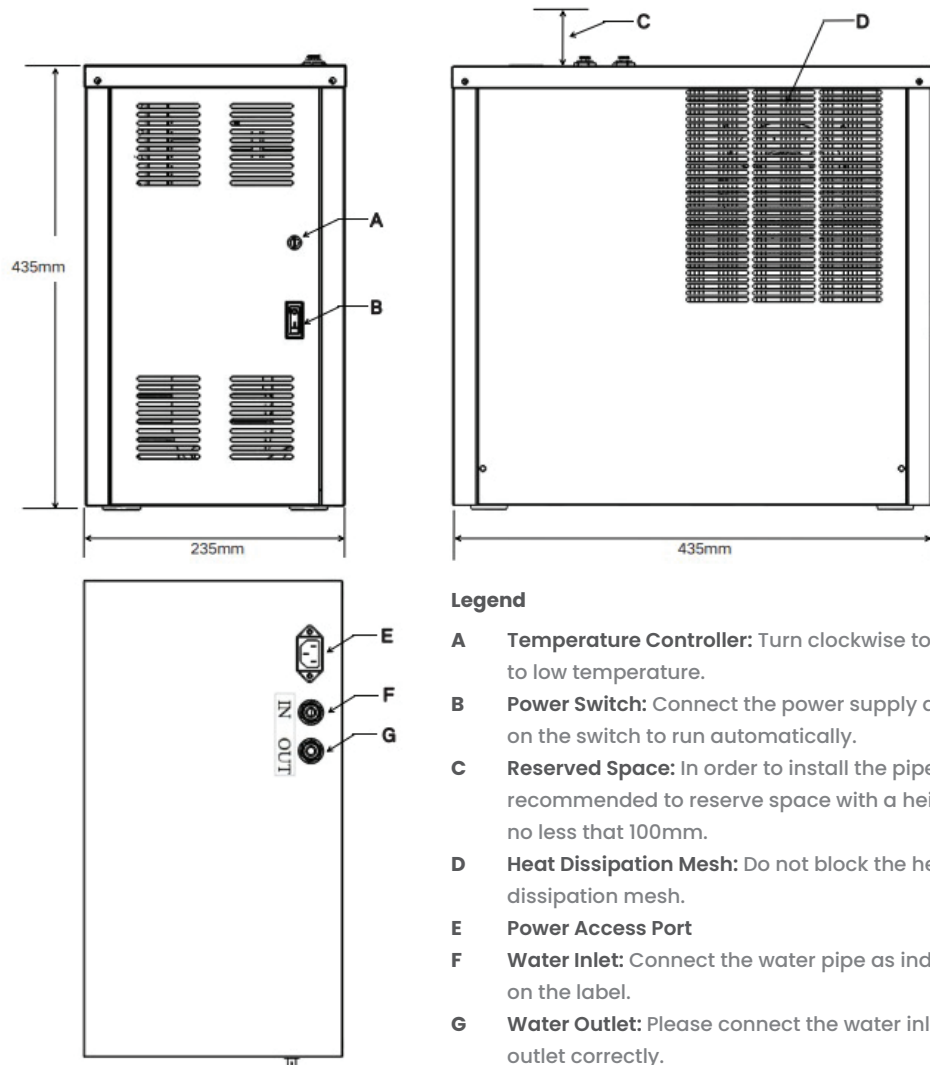
- Installation must be carried out by a qualified professional adhering to the relevant wiring and plumbing regulations in accordance with WRAS and the 18th Edition.
- Always plug the product into a grounded socket (220-240V). For questions regarding electrical supplies, consult a qualified electrician. Installation involving AC 220-240V power, grounding connections, and cable laying must adhere to applicable regulations and electrical equipment standards.
- Connect the power plug to a socket on an RCD circuit breaker.
- Do not unplug or insert the power plug with wet hands.
- Before performing repairs or cleaning, disconnect the power plug to prevent injury or electric shock.
- The installation environment should have a temperature between 5-30°C. Temperatures below 0°C can cause pipes to freeze and rupture, while temperatures above 30°C can lead to malfunction.
- Connect the product exclusively to a drinkable mains cold water supply.
- If the electrical cord is damaged, it must be replaced by a competent and qualified individual.
- Children, and people with reduced physical or mental capabilities must be instructed and supervised on the use of the equipment.
- Any maintenance, servicing and moving of the equipment must only be undertaken by a qualified and trained individual.
- Mains water pressure must be between 1-6 BAR for correct operation.
- Please note: Product warranty is ONLY valid if the product installation has been carried out according to our Installation Instructions and conditions stated on our Terms and Conditions.



This user manual will prevent damage or malfunction due to incorrect use, please read the whole manual.

2 Installation Template

2. Installation Template



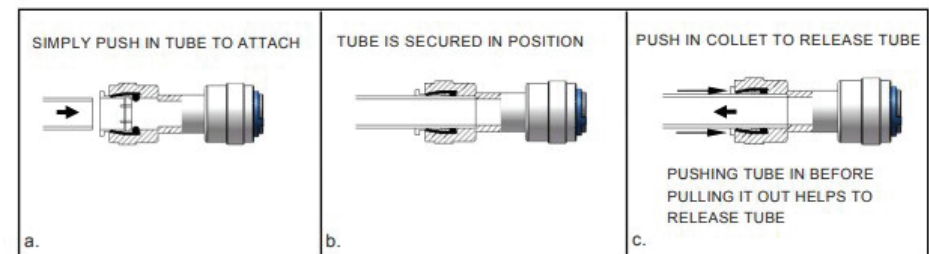
Legend

- A Temperature Controller:** Turn clockwise to adjust to low temperature.
- B Power Switch:** Connect the power supply and turn on the switch to run automatically.
- C Reserved Space:** In order to install the pipeline, it is recommended to reserve space with a height of no less than 100mm.
- D Heat Dissipation Mesh:** Do not block the heat dissipation mesh.
- E Power Access Port**
- F Water Inlet:** Connect the water pipe as indicated on the label.
- G Water Outlet:** Please connect the water inlet and outlet correctly.

3.1 Connecting Water Supply

3.1 Connecting Water Supply

1. It is recommended that a professional Installation Rail kit (WHA approved) is installed which includes isolation valve, pressure reducing valve, non-return valve and a water block.
2. Professional installation rails are available on the Quench website.
3. Isolate the mains water supply and connect the Installation Rail Water to the pipework.
4. Connect the Installation Rail to the water cooler using 6mm pipe.
5. Turn the mains water and inspect for any leaks. If leaks are present, resolve before continuing.
6. Turn the turn on power supply.



3.2 Connecting Electrical Supply

3.2 Connecting Electrical Supply

1. Plug the power cord into the wall outlet.
2. Confirm that the unit is on; both the green LED and bottle counter LCD should illuminate.
3. Test the water dispenser by placing a cup or hand in front of the sensor lens to activate the unit. Water should flow, though sputtering may occur initially due to air in the system.
4. To obtain a steady water flow, hold the activation method until all air is purged from the lines and filter. Multiple activations may be necessary, as the unit dispenses water for only 15 seconds at a time.

4 Maintenance & Care

4. Maintenance & Care

- Water Coolers must be maintained in a hygienic condition
- The Water Cooler Associations demands that all makes and types of Water Coolers must be regularly sanitized.
- POU Coolers must be sanitized, and the filter replaced every 6 months
- Sanitizing should be in accordance with WHA guidelines and carried out by trained personnel.

5 Troubleshooting

5. Troubleshooting

| Fault | Fault Cause |
|--------------------------|--|
| Water Cooler Not Cooling | Check Power Supply |
| | Temperature Setting: adjust or replace thermostat |
| No Water Dispensing | Temperature Sensor Failure |
| | Air Lock in the Cooler: Press the water tap several times to release any air lock. |
| Solenoid not activating | Check power to valve. Replace if power is present but valve is not opening |

6 Warranty Card

6. Warranty Card

| Quench | | Warranty Card | |
|--------------------|---------------------|----------------------------------|--|
| User Name | | User Address | |
| Telephone | | | |
| Date Of Purchase | | Invoice Number | |
| Model | | Serial No. | |
| Date Of Production | | Dealer | |
| Date | Maintenance Records | Maintenance Technician Signature | |
| | | | |



Installation and User Manual

Quench Chilled Water Cooler

Model

WC-Q-UCWC-WM