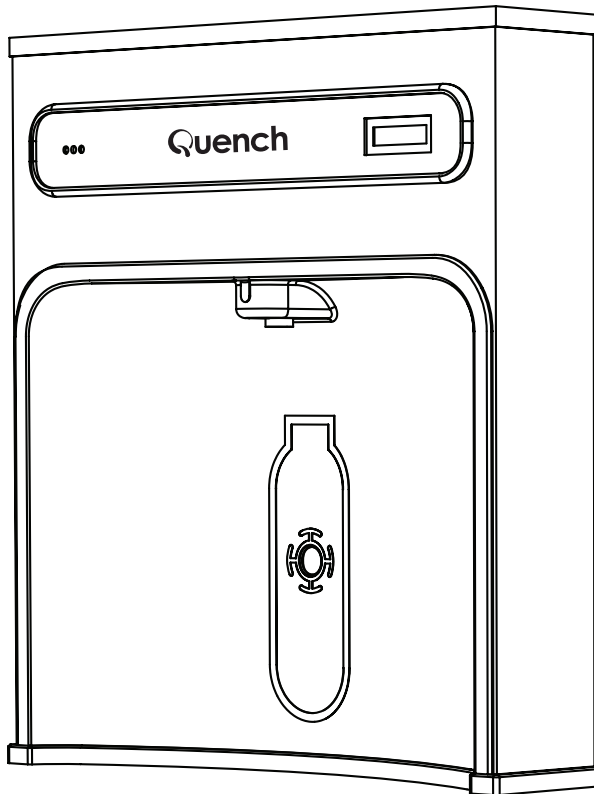




Installation and User Manual

Wall Mounted Bottle Filling Station



Models

WC-Q-BFS-WM-UV-G-WM

WC-Q-BFS-WM-B-WM

Contents

1	Safety Information	3
2.	Installation Template	4
3.	Installation Instructions	5
	3.1 Mounting Instructions	5
	3.2 Connecting Cold Water Supply	6
	3.3 Connecting Electrical Supply	7
7.	Maintenance & Care	7
8.	Troubleshooting	8
9.	Warranty Card	9 – 10

1. Safety Information

- Always plug the product into a grounded socket (220–240V). For questions regarding electrical supplies, consult a qualified electrician. Installation involving AC 220–240V power, grounding connections, and cables must adhere to applicable regulations and electrical equipment standards.
- Installation must be carried out by a qualified professional adhering to the relevant wiring and plumbing regulations in accordance with WRAS and the 18th Edition
- Connect the power plug to a socket on an RCD circuit breaker.
- Do not unplug or insert the power plug with wet hands.
- Before performing repairs or cleaning, disconnect the power plug to prevent injury or electric shock.
- The installation environment should have a temperature between 5–30°C. Temperatures below 0°C can cause pipes to freeze and rupture, while temperatures above 30°C can lead to malfunction.
- Connect the product exclusively to a drinkable mains cold water supply.
- If the electrical cord is damaged, it must be replaced by a competent and qualified individual.
- Children, and persons with reduced physical or mental capability must be instructed and supervised on the use of the equipment.
- Any maintenance, servicing and moving of the equipment must only be undertaken by a qualified and trained individual.
- Please note: Product warranty is ONLY valid if the product installation has been carried out according to our Installation Instructions and conditions stated on our Terms and Conditions.

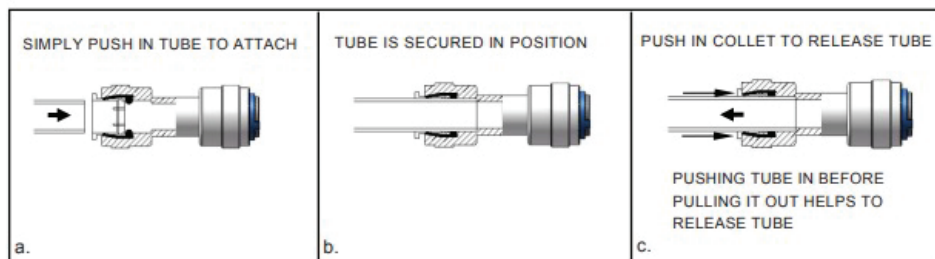


This user manual will prevent damage or malfunction due to incorrect use, please read the whole manual.

3.2 Installation Template

3.2 Connecting Cold Water Supply

1. It is recommended that a professional Installation Rail kit (WHA approved) is fitted which includes isolation valve, pressure reducing valve, non-return valve and a water block.
2. Professional installation rails are available on the Quench website.
3. Isolate the mains water supply and connect the Installation Rail to the pipework.
4. Connect the Installation Rail to the filling station using 6mm push fit pipe.
5. Turn the mains water on and check all connections and fittings for leaks.
6. Turn the turn on power supply.
7. Commissioning the cooler by purging the air out of the machine through the dispenser.



3.3 Electrical Supply

3.3 Connecting Electrical Supply

1. Plug the power cord into the wall outlet.
2. Confirm that the unit is on; both the green LED and bottle counter LCD should illuminate.
3. Test the water dispenser by placing a cup, hand, or object in front of the sensor lens to activate the unit. Water should flow, though sputtering may occur initially due to air in the system.
4. To obtain a steady water flow, hold the activation method until all air is purged from the lines and filter. Multiple activations may be necessary, as the unit dispenses water for only 15 seconds at a time.
5. Inspect for any leaks. If leaks are present, unplug the unit and resolve the issue before continuing.

4 Maintenance & Care

4. Maintenance & Care

- Water Coolers must be maintained in a hygienic condition
- The Water Cooler Associations demands that all makes and types of Water Coolers must be regularly sanitised, using approved sanitising solutions/techniques
- POU Coolers must be sanitised and the filter exchanged every 6 months
- Sanitising should be in accordance with WHA guidelines

5 Troubleshooting

5. Troubleshooting

Fault	
Water Cooler Not Cooling	Check Power Supply
	Temperature Setting: adjust or replace thermostat
Active Sensor Lens in the Cooler	Press the water tap several times to release any air lock.
Solenoid not activating	Check power to valve. Replace if power is present but valve is not opening

6 Warranty Card

6. Warranty Card

Quench		Warranty Card	
User Name		User Address	
Telephone			
Date Of Purchase		Invoice Number	
Model		Serial No.	
Date Of Production		Dealer	
Date	Maintenance Records	Maintenance Technician Signature	

Quench

Models

WC-Q-BFS-WM-UV-G

WC-Q-BFS-WM-B

WC-Q-BFS-P-B

WC-Q-BFS-P-UV-G