



Installation Guide & Owner's Manual

Outdoor Bottle
Filling Station



Model

WC-Q-BFS-WMO-B

Contents

1	Safety Information	3
2.	Installation Template	4 – 5
3.	Installation Instructions	6 – 8
4.	Maintenance & Care	8
5.	Parts	9
6.	Warranty Card	10 – 11

1. Safety Information

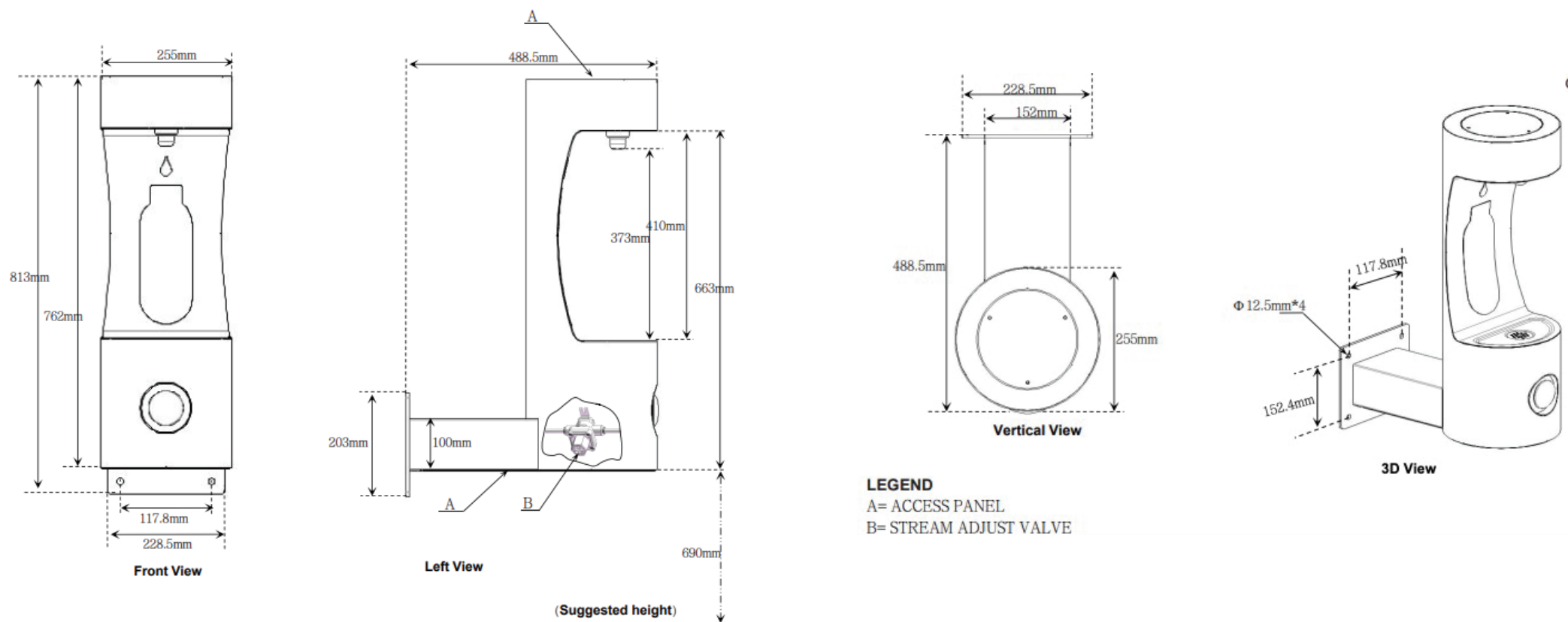
- Installation must be carried out by a qualified professional adhering to the relevant plumbing regulations in accordance with WRAS.
- Connect the product exclusively to a drinkable mains cold water supply.
- Any maintenance, servicing and moving of the equipment must only be undertaken by a qualified and trained individual.
- Please note: Product warranty is ONLY valid if the product installation has been carried out according to our Installation Instructions and conditions stated on our Terms and Conditions.



This user manual will prevent damage or malfunction due to incorrect use, please read the whole manual.

2 Installation Template

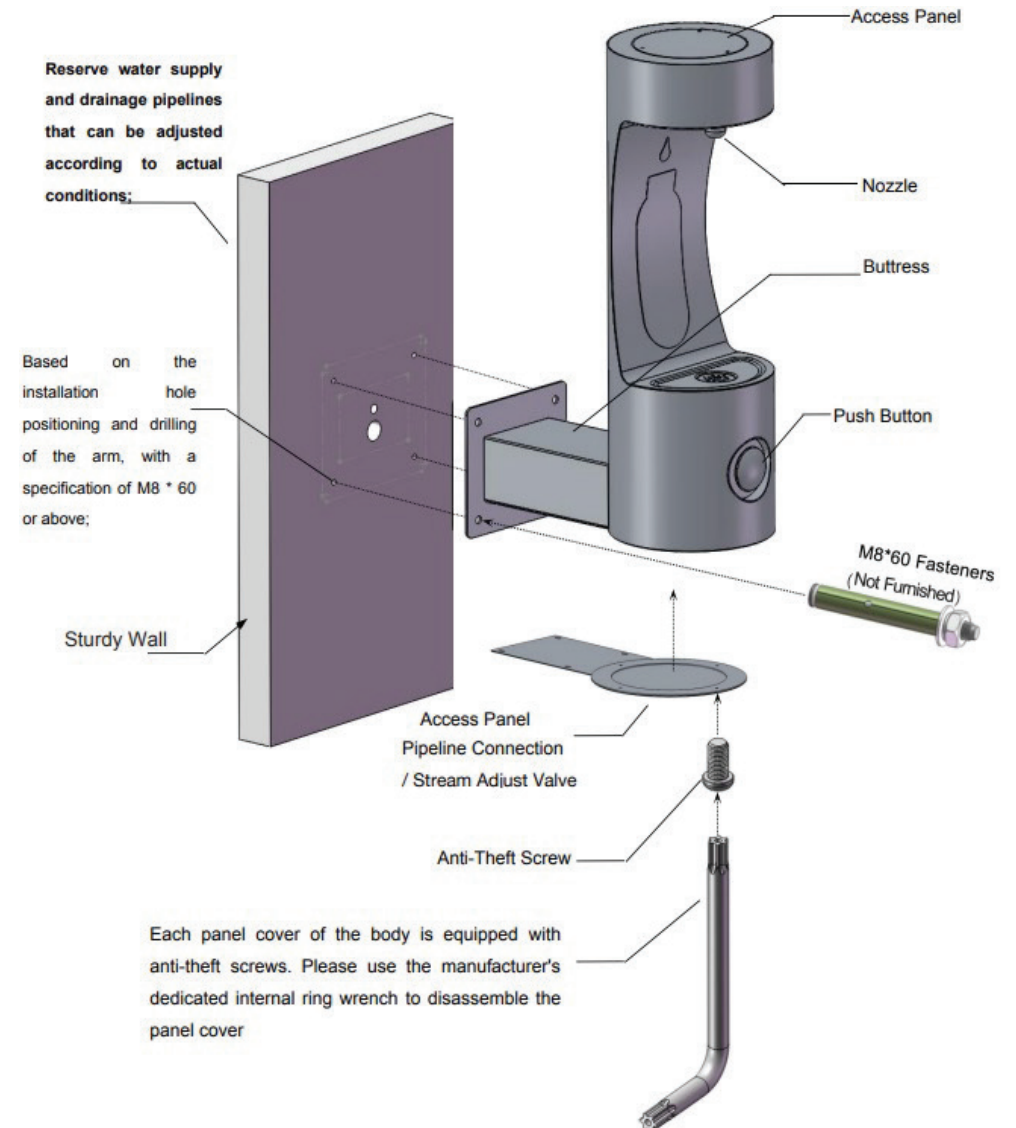
2. Installation Template



3 Installation & Instructions

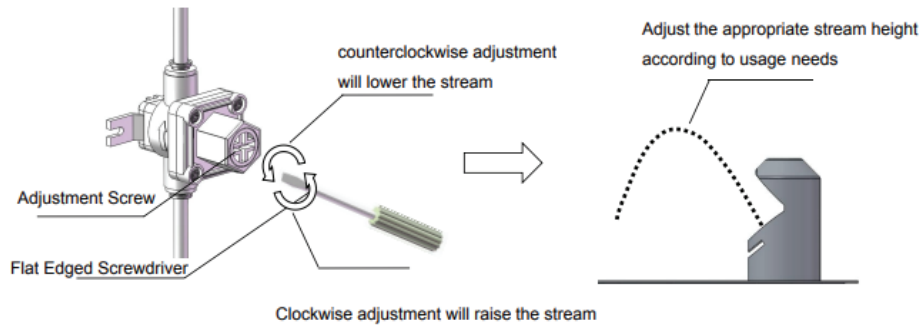
3. Installation & Instructions

1. This fountain is to be mounted on a smooth and flat finished surface with adequate support structure. NOTE: Mounting structure must be capable of supporting 300 lb.
2. Install shut-off valve on water supply.
3. Locate and install fountain to wall using 3/8" minimum screws.
4. Prior to installing the bottle filler to the fountain, insert the drain tube into the arm tunnel and adjust to the left side of arm to the facing button. Install bottle filler to fountain being sure drain tube is above the mounting plate of filler. Connect water supply and fountain drain.
5. Water supply 3/8" copper tube. Waste 1 1/4 "
6. Connecting lines should be thoroughly flushed to remove all foreign matter before being connected to fountain.
7. Turn on water supply and check all connections for leaks. CAUTION: This fountain is rated for inlet water pressure of 2-7 BAR. A pressure-reduced regulator should be used if the inlet water supply exceeds 7 BAR. Any damage caused by connecting this product to supply line pressures lower than 1 BAR or higher than 7 BAR is not covered by the warranty



5 Parts

STREAM HEIGHT ADJUSTMENT: Each outlet has a Pressure Adjustment Valve. Open access panel then using a flat edged screwdriver turn the adjustment screw to desired pressure.



4 Maintenance & Care

4. Maintenance & Care

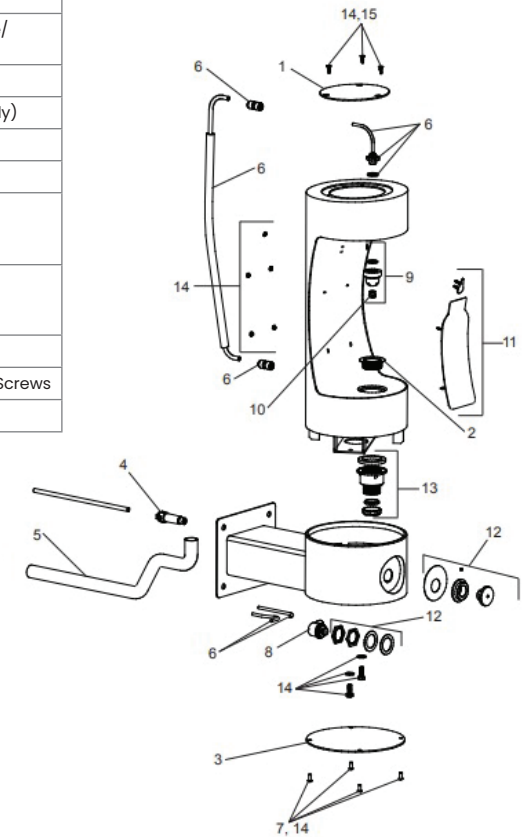
- Water Coolers must be maintained in a hygienic condition
- The Water Cooler Associations demands that all makes and types of Water Coolers must be regularly sanitised, using approved sanitising solutions/techniques
- POU Coolers must be sanitised and the filter exchanged every 6 months
- Sanitising should be in accordance with WHA guidelines



Filters Can Be Purchased From Our Website:
www.quenchthirst.co.uk

5. Parts

Item Number	Description
1	Cover - Round Plate
2	Outdoor Bottle Filter Drain Plug
3	Bottom Cover
4	In - Line Strainer
5	Tube - Drain
6	Kit - Bottle Filter Waterway/Gasket/Nipple/Tubes/Fittings
7	Kit - VR Torx Screws/Bit
8	Kit - 1.0 GPM Regulator/Holder/Nut (BF Only)
9	Kit - Nozzle/Aerator/Gasket/Pin
10	Kit - Aerator
11	Kit - Blank Bottle Filter Trim Kit - LK4405 Bottle Filter Trim Kit - 4405 Bottle Filter Trim
12	Kit - Push Button w/Blank Nameplate Kit - Push Button w/LK4405 Nameplate Kit - Push Button w/4405 Nameplate
13	Kit - Drain Adapter/Gasket/Nut/Washer
14	Kit - Hardware/Bolts/Nuts/Washers/Torx Screws
15	Screw - 1/4"x20 x 3/4" LG. Pinned Torx





Installation Guide & Owner's Manual

Outdoor Bottle
Filling Station

Model

WC-Q-BFS-WMO-B