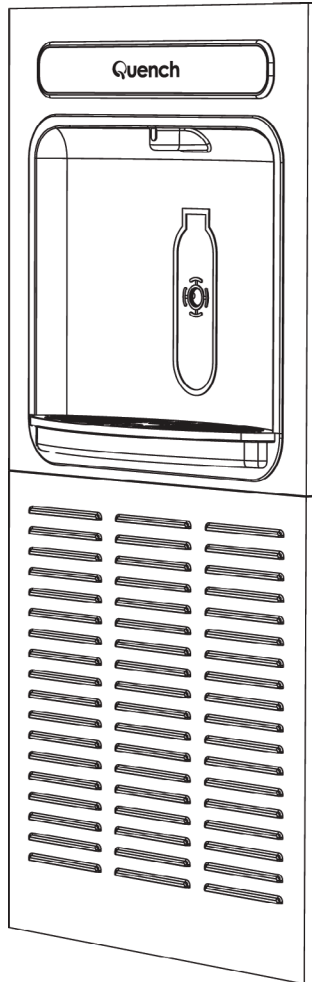




Installation Guide & Owner's Manual

Wall Mounted Bottle
Filling Station



Model

WC-Q-BFS-P-B-WM

WC-Q-BFS-P-UV-G-WM

Contents

1	Safety Information	3
2.	Installation Template	4
3.	Features	5
4.	Connecting Electrical Supply	6
5.	Connecting Water Supply	7
6.	Maintenance & Care	8
7.	Control Board	8 – 11
8.	Troubleshooting	11
9.	Warranty Card	12–13
10.	Water Cooler Maintenance	14

1. Safety Information

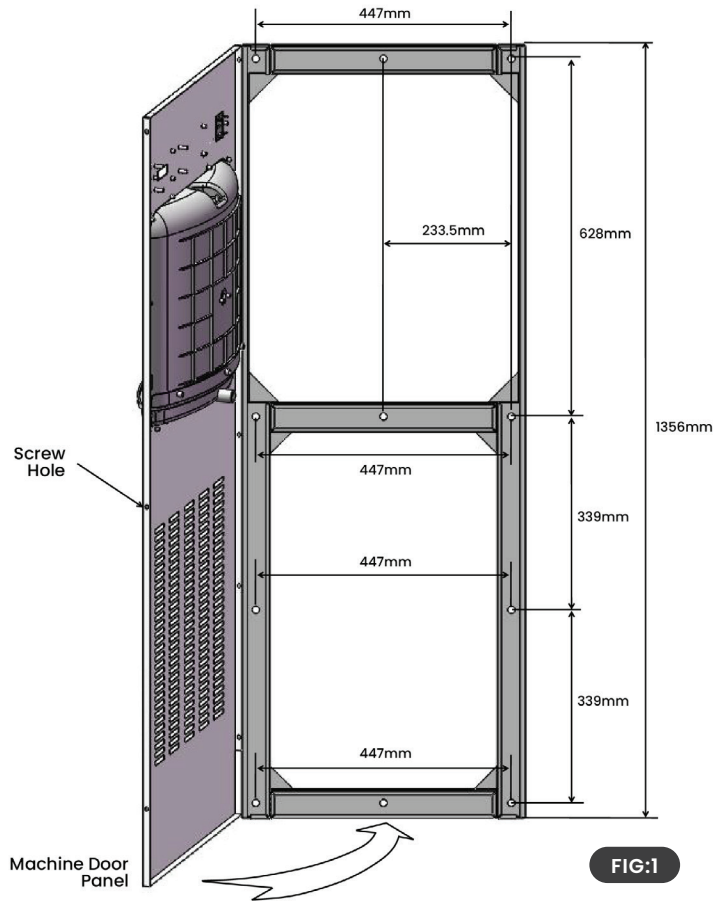
- Installation must be carried out by a qualified professional adhering to the relevant wiring and plumbing regulations in accordance with WRAS and the 18th Edition.
- Always plug the product into a grounded socket (220–240V). For questions regarding electrical supplies, consult a qualified electrician. Installation involving AC 220–240V power, grounding connections, and cables must adhere to applicable regulations and electrical equipment standards.
- Connect the power plug to a socket on an RCD circuit breaker.
- Do not unplug or insert the power plug with wet hands.
- Before performing repairs or cleaning, disconnect the power plug to prevent injury or electric shock.
- The installation environment should have a temperature between 5–30°C. Temperatures below 0°C can cause pipes to freeze and rupture, while temperatures above 30°C can lead to malfunction.
- Connect the product exclusively to a drinkable mains cold water supply.
- If the electrical cord is damaged, it must be replaced by a competent and qualified individual.
- Children or people with reduced physical or mental capability must be instructed and supervised on the use of the equipment.
- Any maintenance, servicing and moving of the equipment must only be undertaken by a qualified and trained individual.

Note:

Please note: Product warranty is ONLY valid if the product installation has been carried out according to our Installation Instructions and conditions stated on our Terms and Conditions.

2 Installation Template

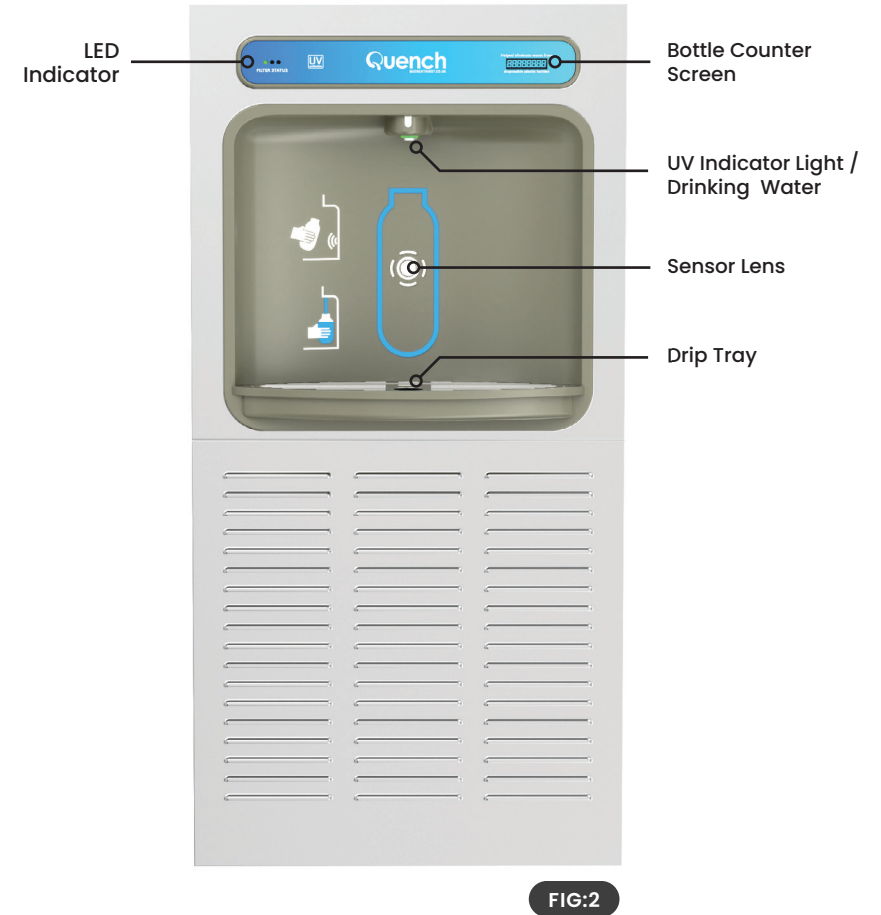
2. Installation Template



- A. Refer to FIG:1 for bracket installation, install fixing screws on the corresponding holes
- B. The plane of the bracket is installed against the wall.
- C. Install the machine panel and install the fixing screws one by one in the screw holes on the upper, lower, and left and right sides.

3 Features

3. Features



Water Feed Inlet Pressure

0.1-0.35Mpa / 1.0-3.5 bars

4 Connecting Water Supply

4. Connecting Electrical Supply

1. After turning on the power, both the green LED and bottle counter LCD light up.
2. Ensure Water Dispenses: Activate the unit by placing a cup, hand or an opaque object in front of the sensor lens water should flow.

Note: It is normal for the water stream to sputter with air when the unit is new or a new filter cartridge is installed.

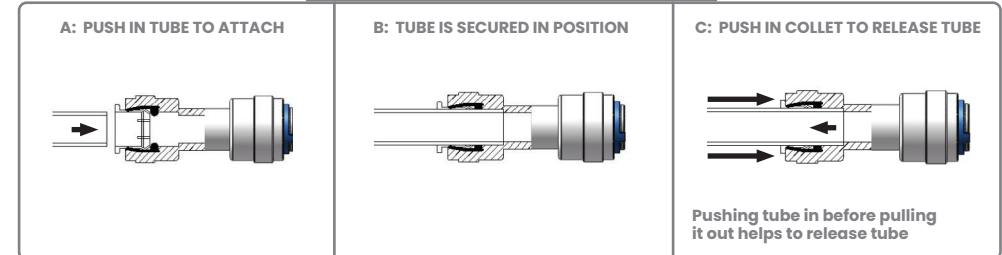
To obtain a steady water flow, hold the activation method until all air is purged from the lines and filter. Multiple activations may be necessary, as the unit dispenses water for only 15 seconds at a time.

5 Connecting Water Supply

5. Connecting Water Supply

1. It is recommended that a professional Installation Rail kit (WHA approved) is installed to the mains water supply which includes an isolation valve, pressure-reducing valve, non-return valve and a water block with 6mm adaptor. **Professional installation rails are available on the Quench website.**
2. Isolate the mains water supply and connect the **Installation rail kit** to the mains pipework using a 15mm compression or plastic tee (**not supplied**)
3. Use 6mm push fit pipe to connect the Installation Rail adaptor to the POU Cooler connection.

OPERATION OF QUICK CONNECT FITTINGS



4. Turn the mains water on and inspect for any leaks. If leaks are present, resolve before continuing.
5. Turn power supply on and test operation.

6 Maintenance & Care

6. Maintenance & Care

- Water Coolers must be maintained in a hygienic condition
- The Water Cooler Associations demands that all makes and types of Water Coolers must be regularly sanitized.
- POU Coolers must be sanitized, and the filter replaced every 6 months.
- Sanitizing should be in accordance with WHA guidelines and carried out by trained personnel.

7 Control Board

7. Control Board

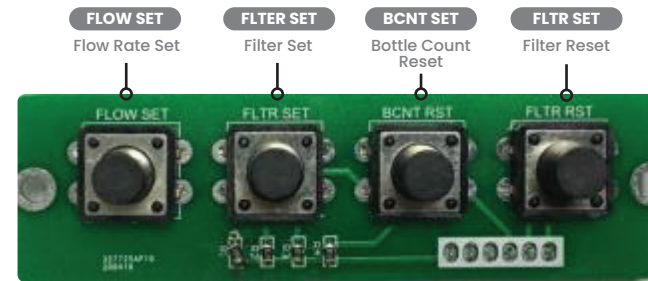
Setting The Control Board

Verify Control Board Software

1. To verify the software program of the control board the unit will need to be shut down and restarted.
2. Unplugging the power cord to perform full shut down.
3. Re-plugging the power cord into restart the control board.
4. The unit will beep upon start up.

Accessing The Programming Button

1. To access the program button, remove the two screws holding the top cover in place. Once top cover is removed the program button can be located on the underside of the unit to the right hand side.



Resetting Filter

1. Press and hold the program button **FLTR SET** for approximately 5 seconds, the screen will flash RST FLTR then all filter monitor indicator lights will flash three times.
2. The green LED should be illuminated indicating that the visual filter monitor has been reset.

- **Green:** LED (Good) Indicates that the filter is operating within 0% and 80% of its life.
- **Yellow:** LED Indicates that the filter is operating within 80% - 100% of its life.
- **Red:** LED (Replace) Indicates that the filter needs to be replaced since it has reached end of filter life.

Testing Bottle Counter

- Place bottle or hand in front of sensor for approximately 9 seconds to see bottle counter count 00000001. (This is based on filling a 20 oz. bottle and the flow rate is estimated at 1.5 gallons per minute.)

Note: Bottle count is approximate and is dependent on water pressure and flow through the filter.

To ensure the accuracy of the count, please calibrate as follows:

Place the 20-ounce (567ml) bottle in front of the sensor to fill and use a stopwatch to start the timer. When the bottle is full of water, read the stopwatch. Then adjust the flow rate.

SETTING ACCORDING TO THE FOLLOWING TABLE

Time (s)	18	15	13	11	10	9	8	7.5	7	6.5	6	5	4.5
Flow Rate (G/M)	0.5	0.6	0.7	0.8	0.9	1.0	1.1	1.2	1.3	1.4	1.5	1.8	2.0

Every 20OZ (567ml) Bottle counter count add 00000001

Setting Flow Rate

Press and hold the program button (**FLOW SET** button) the screen shown below in FIG: 4. Press and hold for 5 seconds to enter the FLOW RATE setup again, the screen shown according to SET - FLOW RATE - GAL/min, FLOW range of 0.5 - 2.0. Press **FLOW SET** again to the cyclic accumulative 0.1 to set to your target FLOW. Press and hold again for 5 seconds or until the unit beeps and the SET - GAL/min blink three times to confirm flow has been confirmed.



FIG: 4

Setting Filter Capacity

- Press and hold the program button (**FLTR SET** button) the screen shown below in fig.5. Press and hold **FLTR SET** for a further press 5 seconds to enter the total filter life setup showing ST-FLTR - GAL Shown in FIG: 5. Total life span of 400 - 5200 GAL (one hundred - bit integer)
- Press **program button?** to the cyclic accumulative 400 then switch to target filter life. Press and hold the button for approximately 5 seconds buzzer will sound feedback then SET - FLTR - GAL will blink three times. Set and return to the main program. Enter any position of the program for setting the life of the total filter element, and no operation will be performed within 5 seconds. Exit this program and return to the operation mode.



FIG: 5

8 Troubleshooting

8. Troubleshooting

Fault	
Water Cooler Not Cooling	Check Power Supply
	Temperature Setting: adjust or replace thermostat
No Water Dispensing	Check Water Supply
	Air Lock in the Cooler: Press the water tap several times to release any air lock.
	Solenoid not activating: Check power to valve. Replace if power is present but valve is not opening

Quench

Model

WC-Q-BFS-P-B-WM

WC-Q-BFS-P-UV-G-WM