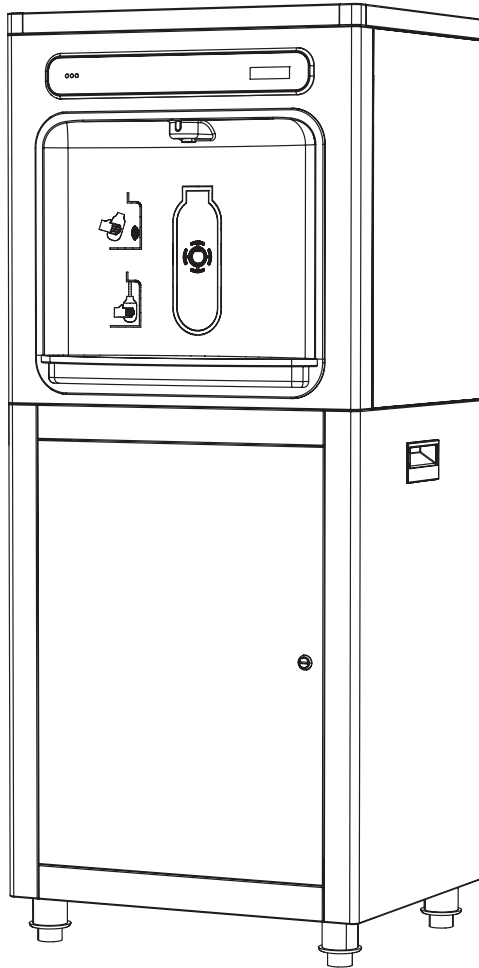




Installation Guide & Owner's Manual

Floorstanding Bottle
Filling Station



Models

WC-Q-BFS-FS-B

WC-Q-BFS-FS-UV-G

Contents

1	Safety Information	3
2.	Installation Template	4
3.1	Connecting Water Supply	5
3.2	Connecting Electrical Power	6
4.	Function Description	7
8.	Control Board	8 – 10
9.	Maintenance & Care	11
10.	Troubleshooting	11
11.	Warranty Card	12 –13

1. Safety Information

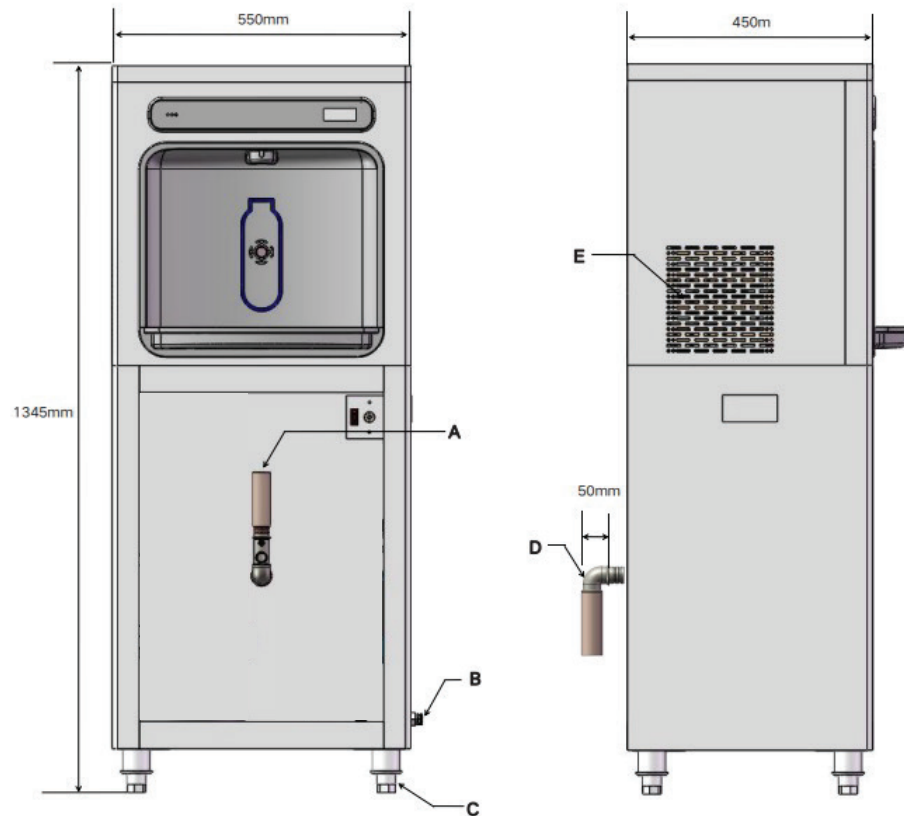
- Installation must be carried out by a qualified professional adhering to the relevant wiring and plumbing regulations in accordance with WRAS and the 18th Edition
- Always plug the product into a grounded socket (220–240V). For questions regarding electrical supplies, consult a qualified electrician. Installation involving AC 220–240V power, grounding connections, and cables must adhere to applicable regulations and electrical equipment standards.
- Connect the power plug to a socket on an RCD circuit breaker.
- Do not unplug or insert the power plug with wet hands.
- Before performing repairs or cleaning, disconnect the power plug to prevent injury or electric shock.
- The installation environment should have a temperature between 5–30°C. Temperatures below 0°C can cause pipes to freeze and rupture, while temperatures above 30°C can lead to malfunction.
- Connect the product exclusively to a drinkable mains cold water supply.
- If the electrical cord is damaged, it must be replaced by a competent and qualified individual.
- Children, and people with reduced physical or mental capabilities must be instructed and supervised on the use of the equipment.
- Any maintenance, servicing and moving of the equipment must only be undertaken by a qualified and trained individual.
- Please note: Product warranty is ONLY valid if the product installation has been carried out according to our Installation Instructions and conditions stated on our Terms and Conditions.



This user manual will prevent damage or malfunction due to incorrect use, please read the whole manual.

2 Installation Template

2. Installation Template



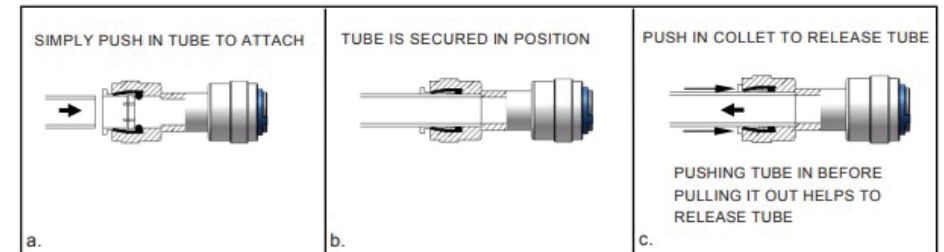
Legend

- A:** Please ensure that the water pipe of the water tray is successfully inserted into the drainage component
- B:** Water inlet fitting
- C:** Install the machine foot knob to adjust the balance of the machine body
- D:** Reserve a space of 50mm behind the back panel of the fuselage to install drainage elbows
- E:** There should be no obstacles in front of the cooling mesh hole 200mm

3.1 Connecting Water Supply

3.1 Connecting Water Supply

1. It is recommended that a professional Installation Rail kit is installed (WHA approved) which includes isolation valve, pressure reducing valve, non-return valve and a water block with 6mm adaptor.
2. Professional installation rails are available on the Quench website.
3. Isolate the mains water supply and connect the Installation Rail to the pipework.
4. Using 6mm pipe, connect the rail kit to water inlet fitting.
5. Turn the mains water on and check all connections and fittings for leaks.
6. Turn the turn on power supply.
7. Commissioning the cooler by purging the air out of the machine through the dispenser.



3.2 Connecting Electrical Power

3.2 Connecting Electrical Power

1. Plug the power cord into the wall outlet.
2. Confirm that the unit is on; both the green LED and bottle counter LCD should illuminate.
3. Test the water dispenser by placing a cup, hand or object in front of the sensor lens to activate the unit. Water should flow, though spluttering may occur initially due to air in the system.
4. To obtain a steady water flow, hold the activation method until all air is purged from the lines and filter. Multiple activations may be necessary, as the unit dispenses water for only 15 seconds at a time.
5. Inspect for any leaks. If leaks are present, unplug the unit and resolve the issue before continuing.

4 Function Description

4. Function Description

1. After turning on the power both the green LED and bottle counter LCD light up.
2. Activate unit by placing cup or hand in front of the sensor lens and water should flow. It is normal for the water to splutter with air when the unit is new or a new filter cartridge is installed.
3. When there is no need for chilled water, the refrigeration system switch can be turned off.
4. The temperature controller rotates clockwise to indicate low temperature and counter-clockwise to indicate high temperature with a controllable range of approximately 2-12 degrees Celsius.
5. For RO system, please ensure that the water storage bucket switch is tuned on.

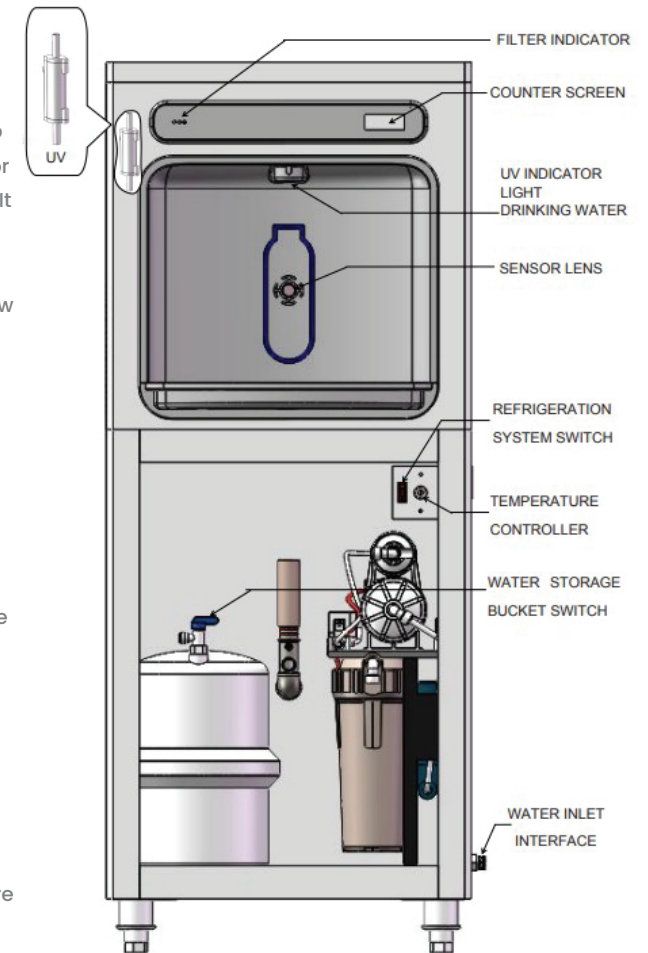


FIG.4

5 Control Board

5. Control Board

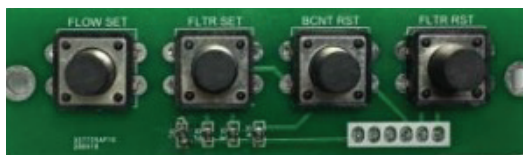
Setting The Control Board

Verify Control Board Software

1. To verify the software program of the control board the unit will need to be shut down and restarted.
2. Unplugging the power cord to perform full shut down.
3. Re-plugging the power cord will restart the control board
4. The unit will beep upon start up.

Accessing The Programming Button

1. To access the program button, remove the two screws holding the top cover in place. Once top cover is removed the program button can be located on the underside of the unit to the right hand side.



Resetting The Bottle Count

1. Press and hold the program button (FLTR REST) for approximately 5 seconds, the screen will flash RST FLTR then all filter monitor indicator lights will flash three times.
2. The green LED should be illuminated indicating that the visual filter monitor has been reset

4. There are three (3) LED'S that indicate the following:

- Green: LED (Good) Indicates that the filter is operating within 0% and 80% of its life
- Yellow: LED Indicates that the filter is operating within 80% - 100% of it's life
- Red: LED (Replace) Indicates that the filter needs to be replaced since it has reached end of filter life.

Testing Bottle Counter

1. Place bottle or hand in front of sensor for approximately 9 seconds to see bottle counter count 00000001. (This is based on filling a 20 oz. bottle and the flow rate is estimated at 1.5 gallons per minute.)
2. Then return to run mode showing 00000000 bottles. The display will return to bottle counter and be in run mode.

NOTE: Bottle count is approximate and is dependent on water pressure and flow through the

To ensure the accuracy of the count, please calibrate as follows:

Place the 20-ounce (567ml) bottle in front of the sensor to fill and use a stopwatch to start the timer. When the bottle is full of water, read the stopwatch. Then adjust the flow rate

Settings according to the following table:

Time (S)	18	15	13	11	10	9	8	7.5	7	6.5	6	5	4.5
Flow Rate (G/M)	0.5	0.6	0.7	0.8	0.9	1.0	1.1	1.2	1.3	1.4	1.5	1.8	2.0

Every 20OZ (567ml) Bottle counter count add 00000001

6 Maintenance & Care

Setting Flow Rate

Press and hold the program button (FLOW SET button) the screen shown below in figure 4,. Press and hold for 5 seconds to enter the FLOW RATE setup again, the screen shown according to SET - FLOW RATE - GAL/min, FLOW range of 0.5 - 2.0. Press again to the cyclic accumulative 0.1 to set to your target FLOW. Press and hold again for 5 seconds or until the unit beeps and the SET - GAL/min blink three times to confirm flow has been confirmed.



Setting Filter Capacity

Press and hold the program button (FLTR SET button) until you see the screen displayed in Fig. 5. Maintain pressure for 5 seconds to access the total filter life setup, which shows ST-FLTR - GAL, with a total lifespan ranging from 400 to 5200 GAL. Press the button to cycle through the accumulated total of 400, switching to the target filter life. Again, hold the button for about 5 seconds until you hear a buzzer indicating feedback. The SET - FLTR - GAL will blink three times, confirming the total filter life settings before returning to the main program. If no operation is performed within 5 seconds while in any position of the program, it will exit this setting mode and revert to normal operation mode.



6. Maintenance & Care

- Water Coolers must be maintained in a hygienic condition
- The Water Cooler Associations demands that all makes and types of Water Coolers must be regularly sanitised, using approved sanitising solutions/techniques
- POU Coolers must be sanitised and the filter exchanged every 6 months
- Sanitising should be in accordance with WHA guidelines

7 Troubleshooting

7. Troubleshooting

Fault	
Water Cooler Not Cooling	Check Power Supply
	Temperature Setting: adjust or replace thermostat
No Water Dispensing	Check water supply
Air Lock in the Cooler	Press the water tap several times to release any air lock.
Solenoid not activating	Check power to valve. Replace if power is present but valve is not opening

Quench

Models

WC-Q-BFS-FS-B

WC-Q-BFS-FS-UV-G