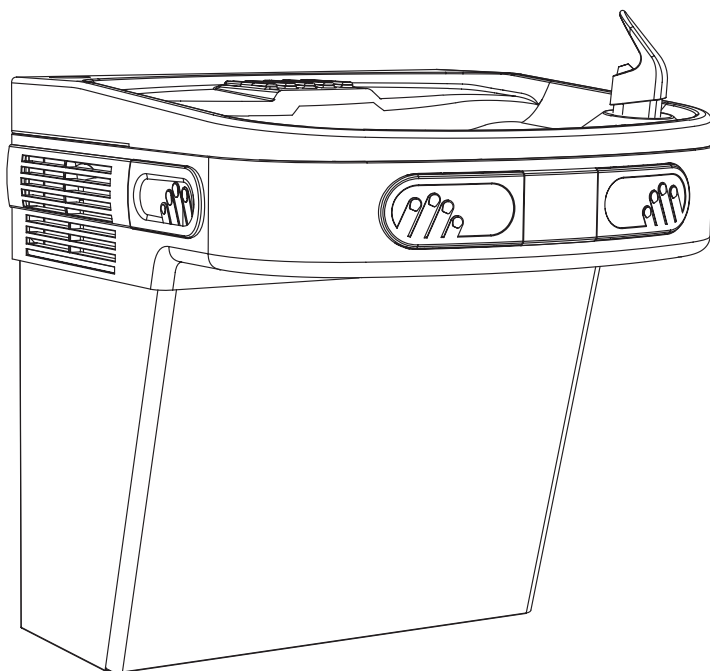




Installation Guide & Owner's Manual

Wall Mounted Water Fountain



Models

WC-Q-WMDWF-B-WM

WC-Q-WMDWF-G-WM

Contents

1	Safety Information	3
2.	Installation Template	4
3.	Installation Instructions	5
	3.1 Mounting Instructions	5
	3.3 Connecting Water Supply	5
7.	Maintenance & Care	6
8.	Troubleshooting	6
9.	Warranty Card	7 – 8

1. Safety Information

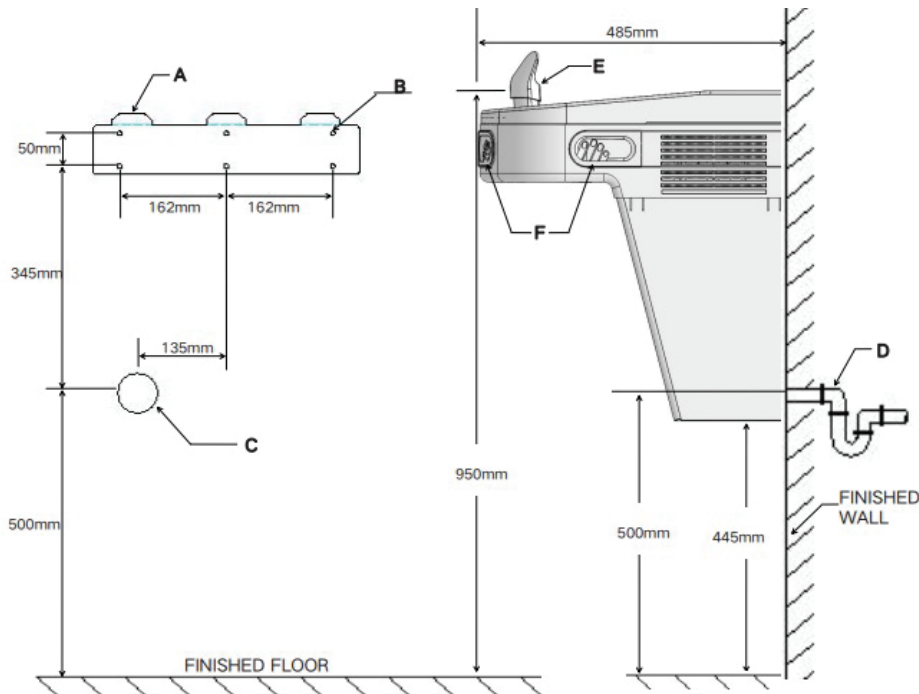
- Installation must be carried out by a qualified professional adhering to the relevant wiring and plumbing regulations in accordance with WRAS
- Connect the product exclusively to a drinkable mains cold water supply.
- Any maintenance, servicing and moving of the equipment must only be undertaken by a qualified and trained individual.
- Please note: Product warranty is ONLY valid if the product installation has been carried out according to our Installation Instructions and conditions stated on our Terms and Conditions.



This user manual will prevent damage or malfunction due to incorrect use, please read the whole manual.

2 Installation Template

2. Installation Template



Legend

- A. TABS:** Buckle the respective bayonets into the corresponding lugs.
- B. HANGING PLATE** Recommended installation location.
- C. WALL HOLE** Recommended water supply and drainage locations. The recommended diameter of opening on the wall is 60mm.
- D. DRAIN TRAP** Customer supplied. Connect the waste water outlet with a hose with an inner diameter of 11mm.
- E. WATER SPRAY FAUCET**
- F. WATER OUTLET BUTTON**

3.1 Mounting Instructions

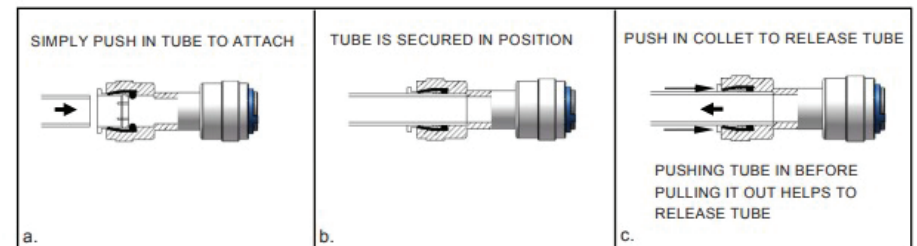
3.1 Mounting Instructions

1. Ensure that the wall structure is intact and can withstand the load imposed by the machine. Install additional wall support (not provided) if necessary.
2. Ensure main water supply and waste pipe are correctly located as specified on the template.
3. Fix wall bracket to wall using the appropriate fittings. Hang water fountain to wall bracket.

3.2 Connecting Water Supply

3.2 Connecting Water Supply

1. It is recommended that a professional Installation Rail kit (WHA approved) is installed to the mains water which includes isolation valve, pressure reducing valve, non-return valve and a water block.
2. Professional installation rails are available on the Quench website.
3. Isolate the mains water supply and connect the Installation Rail to the pipework.
4. Connect the Installation Rail to the POU Cooler connection on the water cooler.
5. Turn the mains water on and check all connections and fittings for leaks.
6. Commissioning the cooler by purging the air out of the machine through the dispenser.



4 Maintenance & Care

4. Maintenance & Care

- Water Coolers must be maintained in a hygienic condition
- The Water Cooler Associations demands that all makes and types of Water Coolers must be regularly sanitised, using approved sanitising solutions/techniques
- POU Coolers must be sanitised and the filter exchanged every 6 months
- Sanitising should be in accordance with WHA guidelines

5 Troubleshooting

5. Troubleshooting

Fault	
No Water Dispensing	Check water supply is turned on
	Air Lock in the Cooler: Press the water tap several times to release any air lock.

6 Warranty Card

6. Warranty Card

Quench		Warranty Card	
User Name		User Address	
Telephone			
Date Of Purchase		Invoice Number	
Model		Serial No.	
Date Of Production		Dealer	
Date	Maintenance Records	Maintenance Technician Signature	



**Installation Guide
& Owner's Manual**
Wall Mounted Water Fountain

Models

WC-Q-WMDWF-B-WM

WC-Q-WMDWF-G-WM